



Fishermen and Scientists Research Society

Lobster Recruitment Project Results


LFA 33 2011/ 2012 Season





FSRS Lobster Recruitment Index Project and Commercial Trap Sampling Project – LFA 33

Important Points and Reminders

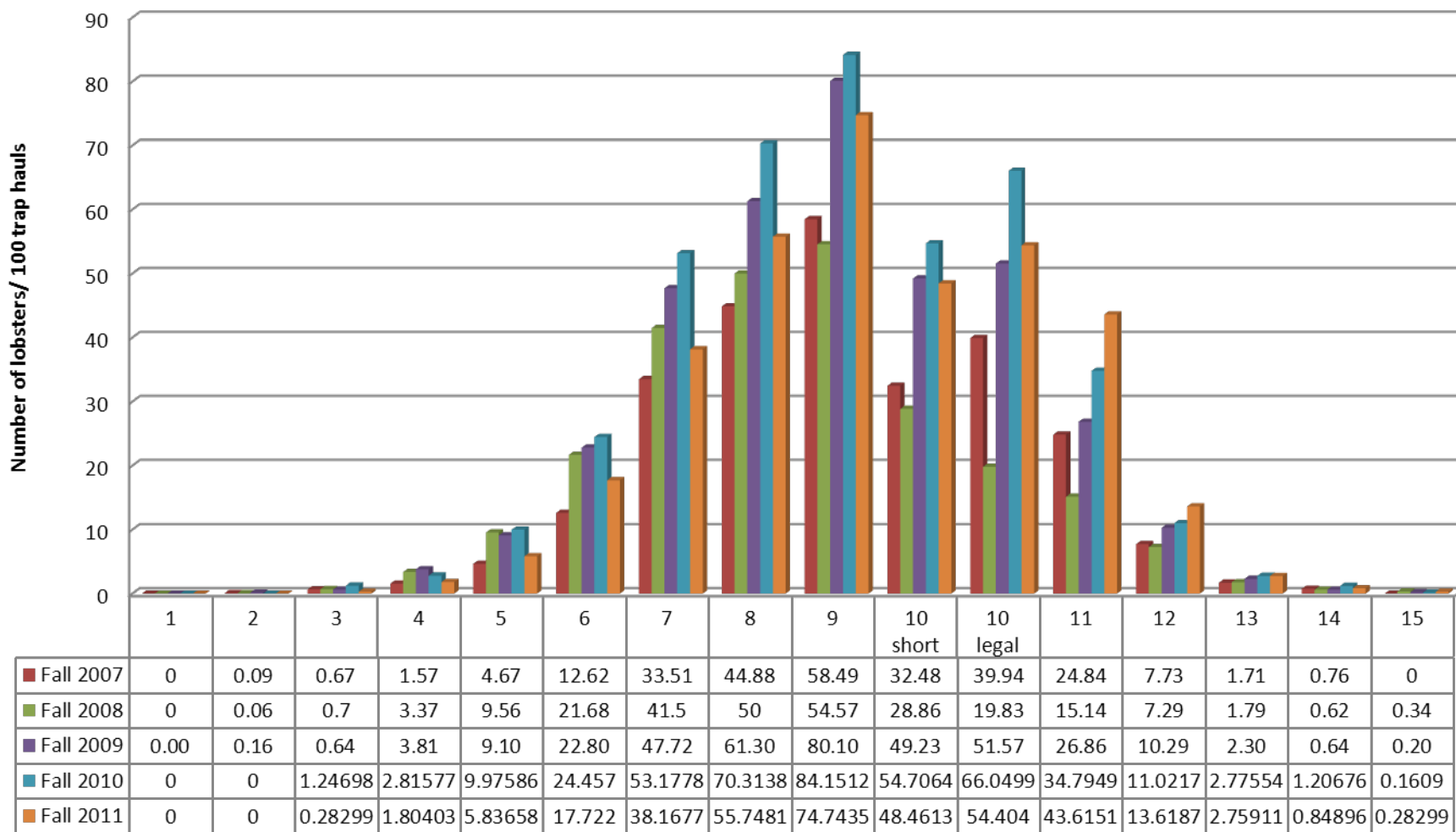
- Previously signed MOU's valid for length of time participant in the Recruitment study.
- Reimbursement of expense allowance - **\$32.50 per trap** for only the Fall 2012 portion of the 2012 2013 season (half of the full season expense rate).
- Must submit a completed expense claim form at the end of the season along with the completed logbook and temperature gauge.

- 
- Traps in addition to your legal limit and must display the scientific tags provided.
 - Keep a copy of the scientific permit on board the vessel.
 - Must abide by the conditions of the scientific permit.
 - Return all lobsters from the science traps (LR and CTS traps) to the water.

- 
- Recruitment Project traps must be fished in same location throughout season. **If move traps record new position and advise FSRS of reason ASAP.**
 - Commercial Trap Sampling Project traps can be deployed and moved with your regular commercial gear. Make sure to report the position.
 - If lose trap, report it and scientific tag number lost to FSRS immediately.
 - If lose minilog report it to FSRS immediately.

- 
- ❑ Funding for this project will run out March 31st 2013.
Currently investigating new options to ensure continuation of this project. One option: participants keep legal lobsters from their science traps, traps in addition to their legal limit, and participants will have to pay for any replacement traps. April 1 2013, traps will be \$74+HST. All other equipment for this project will be provided by the FSRS.
 - ❑ Minilog temperature gauges cost the FSRS \$250 each.
PLEASE be very careful with retrieving these gauges as we have had many missing ones over the years and will be forced to charge for the use of them if they are carelessly used.

Number of lobsters caught per 100 trap hauls for Fall season LFA 33



Fall 2007

35 Fishermen

5874 Lobsters

2226 Trap Hauls

Fall 2008

39 Fishermen

8647 Lobsters

2538 Trap Hauls

Fall 2009

44 Fishermen

9308 Lobsters

2523 Trap Hauls

Fall 2010

44 Fishermen

10363 Lobsters

2486 Trap Hauls

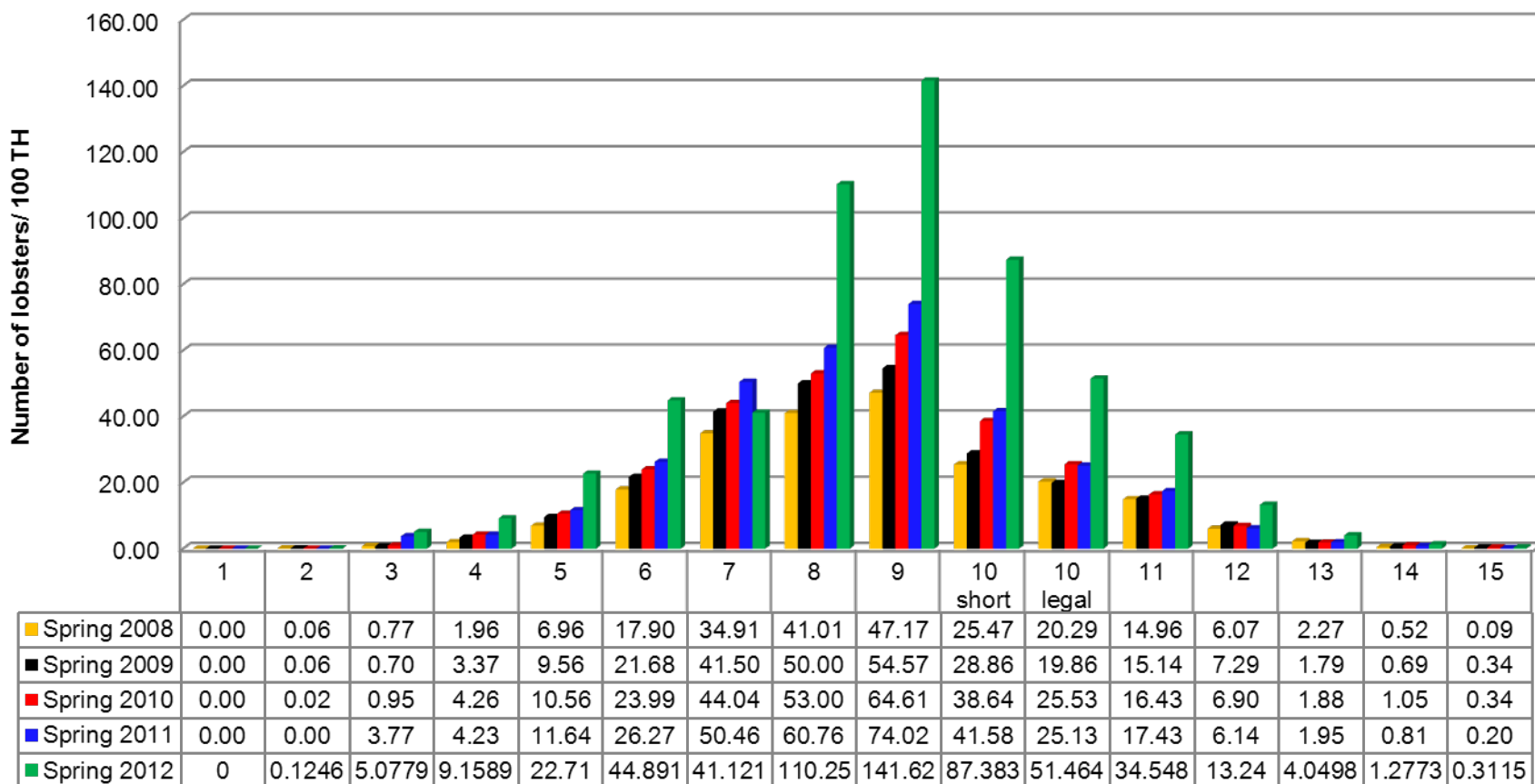
Fall 2011

41 Fishermen

10129 Lobsters

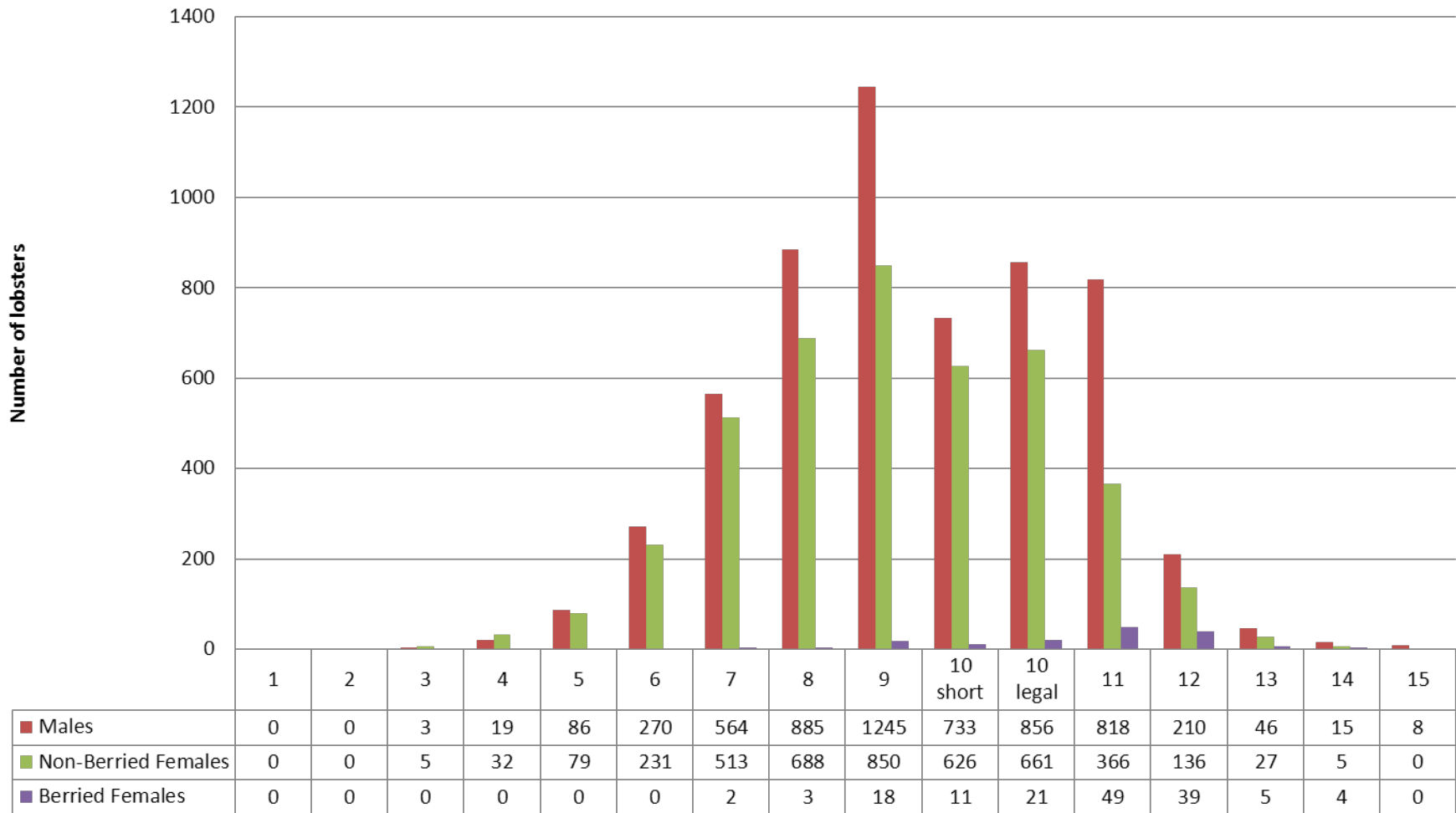
2589 Trap Hauls

Number of lobsters caught per 100 trap hauls Spring season LFA 33



Spring 2008	39 Fishermen	7188 Lobsters	3263 Trap Hauls
Spring 2009	39 Fishermen	9104 Lobsters	3566 Trap Hauls
Spring 2010	47 Fishermen	11949 Lobsters	4089 Trap Hauls
Spring 2011	44 Fishermen	9978 Lobsters	3076 Trap Hauls
Spring 2012	38 Fishermen	18208 Lobsters	3210 Trap Hauls

Number of lobsters caught by sex for LFA 33 Fall 2011



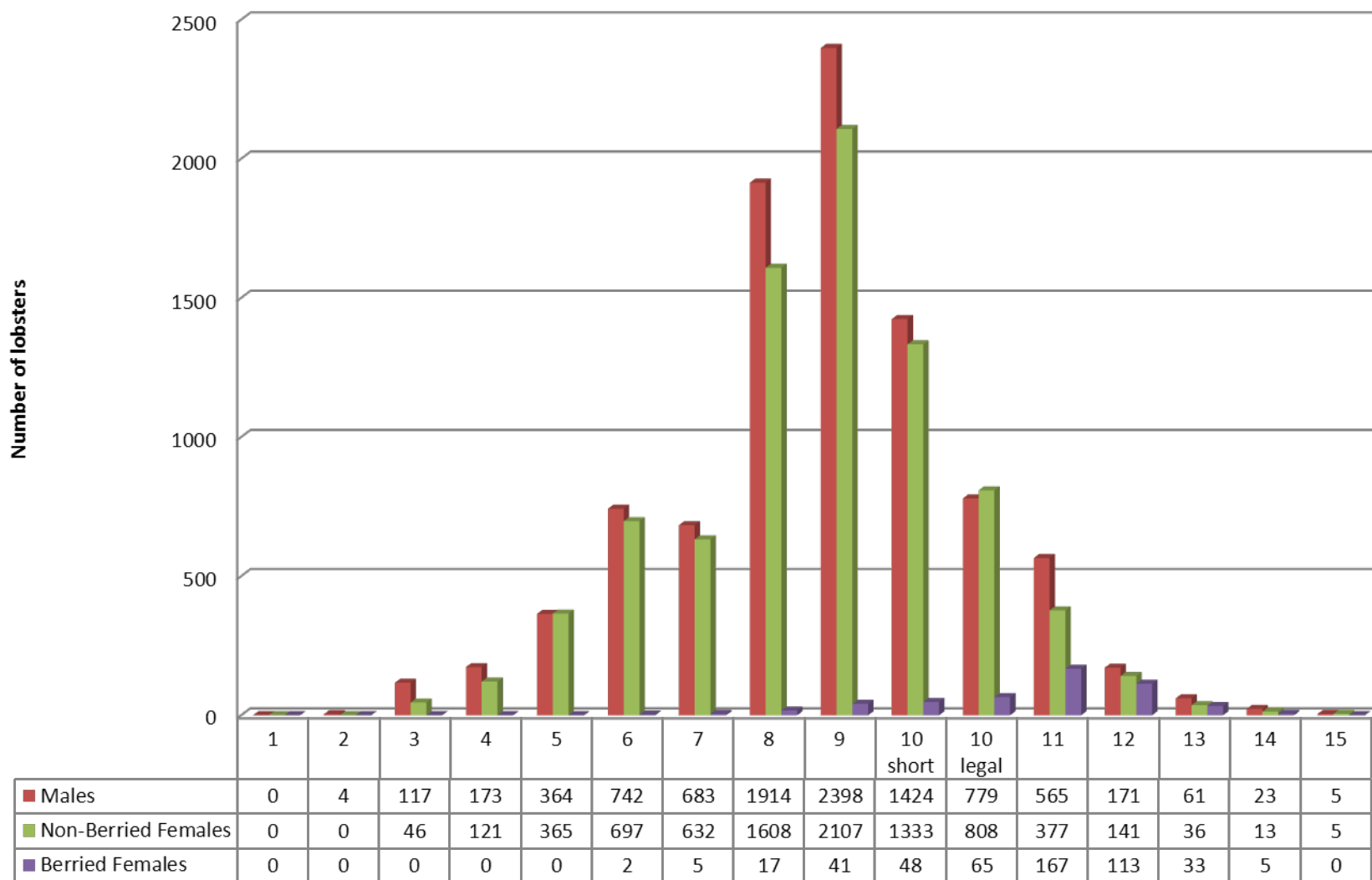
Fall 2010 Males=5591

Non-Berried Females=4647 Berried Females=125

Fall 2011 Males=5758

Non-Berried Females=4219 Berried Females=152

Number of lobsters caught by sex for LFA 33 Spring 2012



Spring 2011
Spring 2012

Males=5136
Males=9423

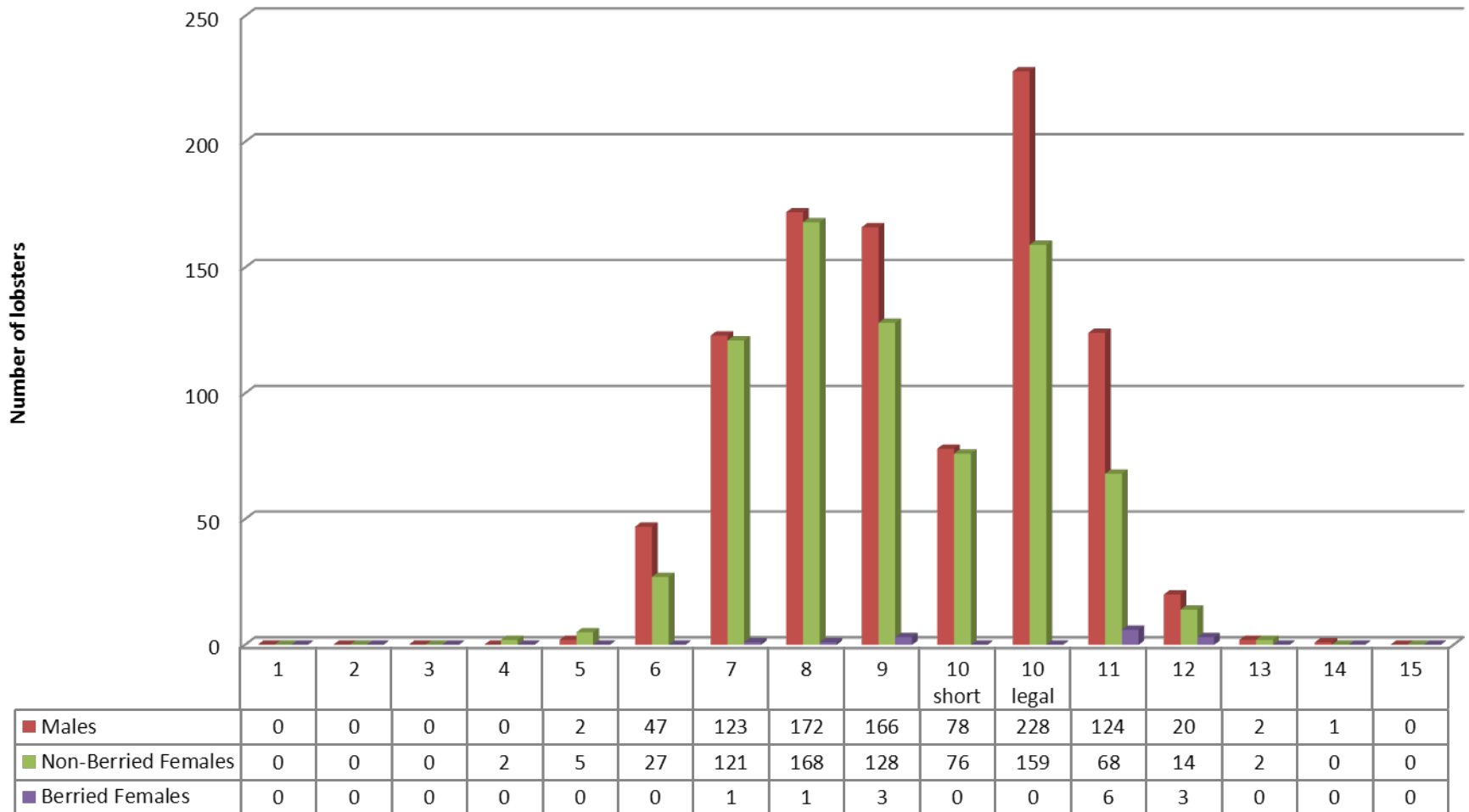
Non-Berried Females=4634
Non-Berried Females=8289

Berried Females=208
Berried Females=496

Number of lobsters caught for Port Mouton area Fall 2011

1747 Lobsters

492 Trap hauls



Fall 2010
Fall 2011

Males=1200
Males=963

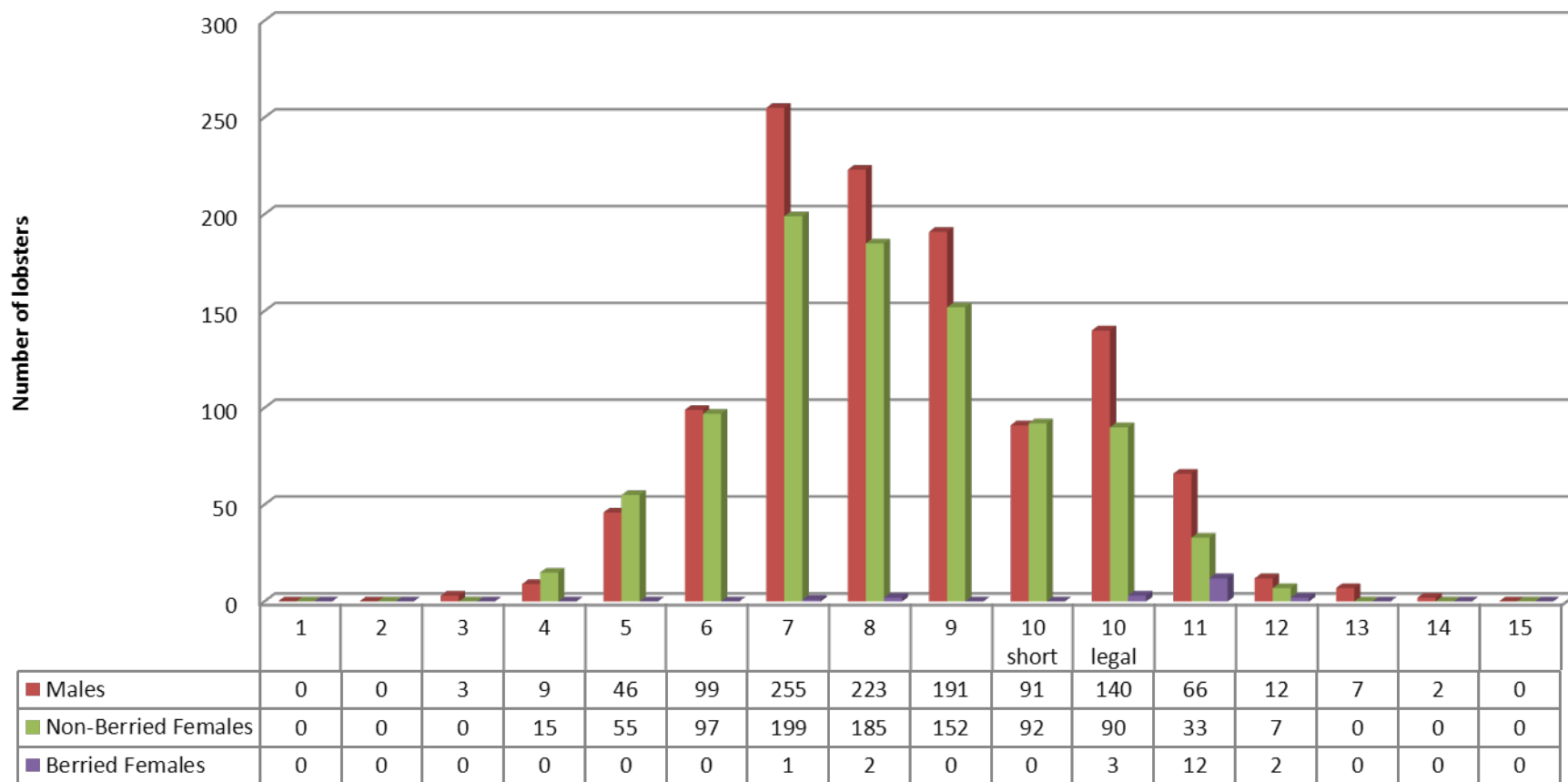
Non-Berried Females=966
Non-Berried Females=770

Berried Females=8
Berried Females=14

Number of lobsters caught for Port Mouton Spring 2012

2089 Lobsters

552 Trap Hauls



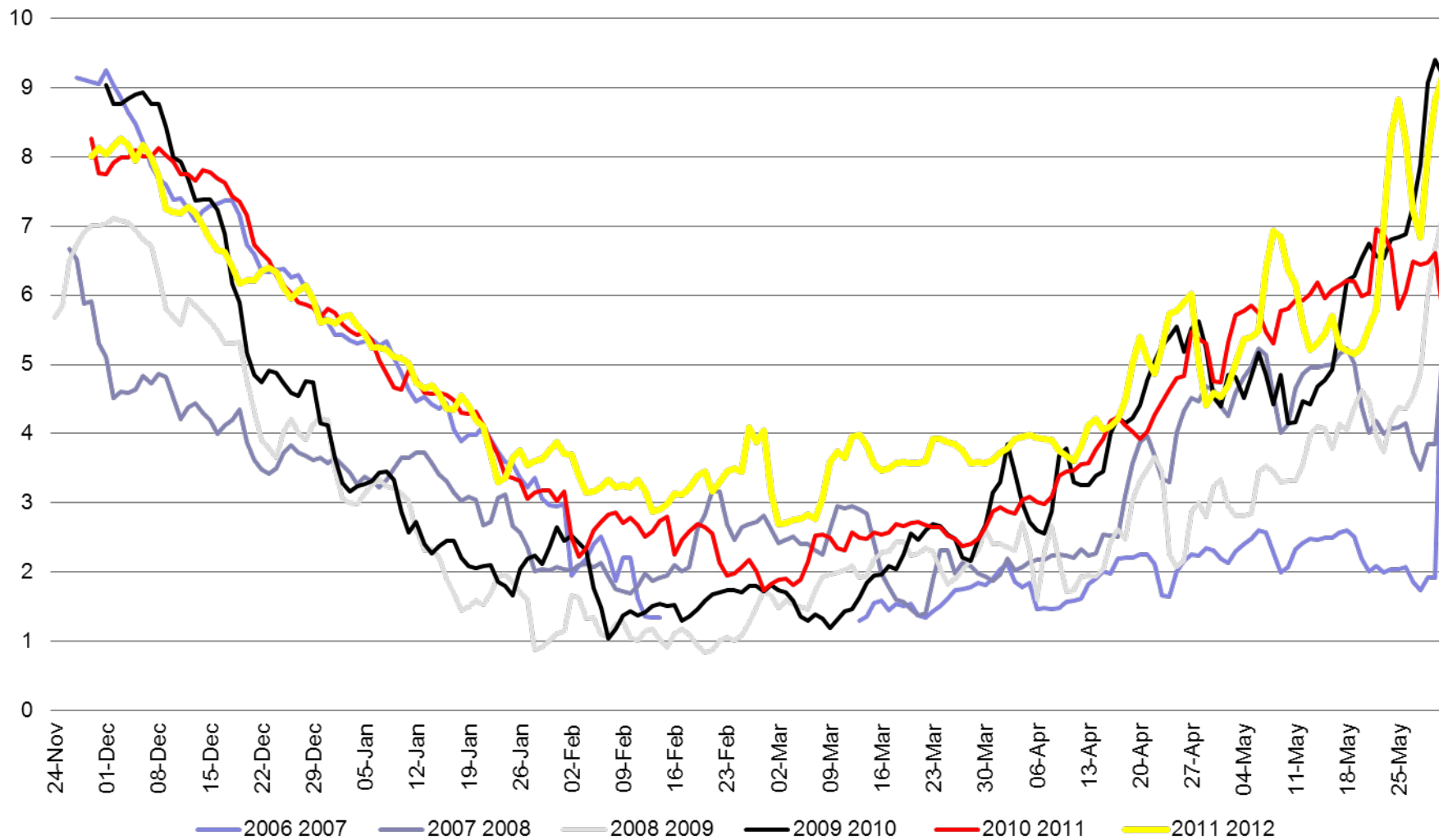
Spring 2011
Spring 2012

Males=793
Males=1144

Non-Berried Females=641
Non-Berried Females=925

Berried Females=10
Berried Females=20

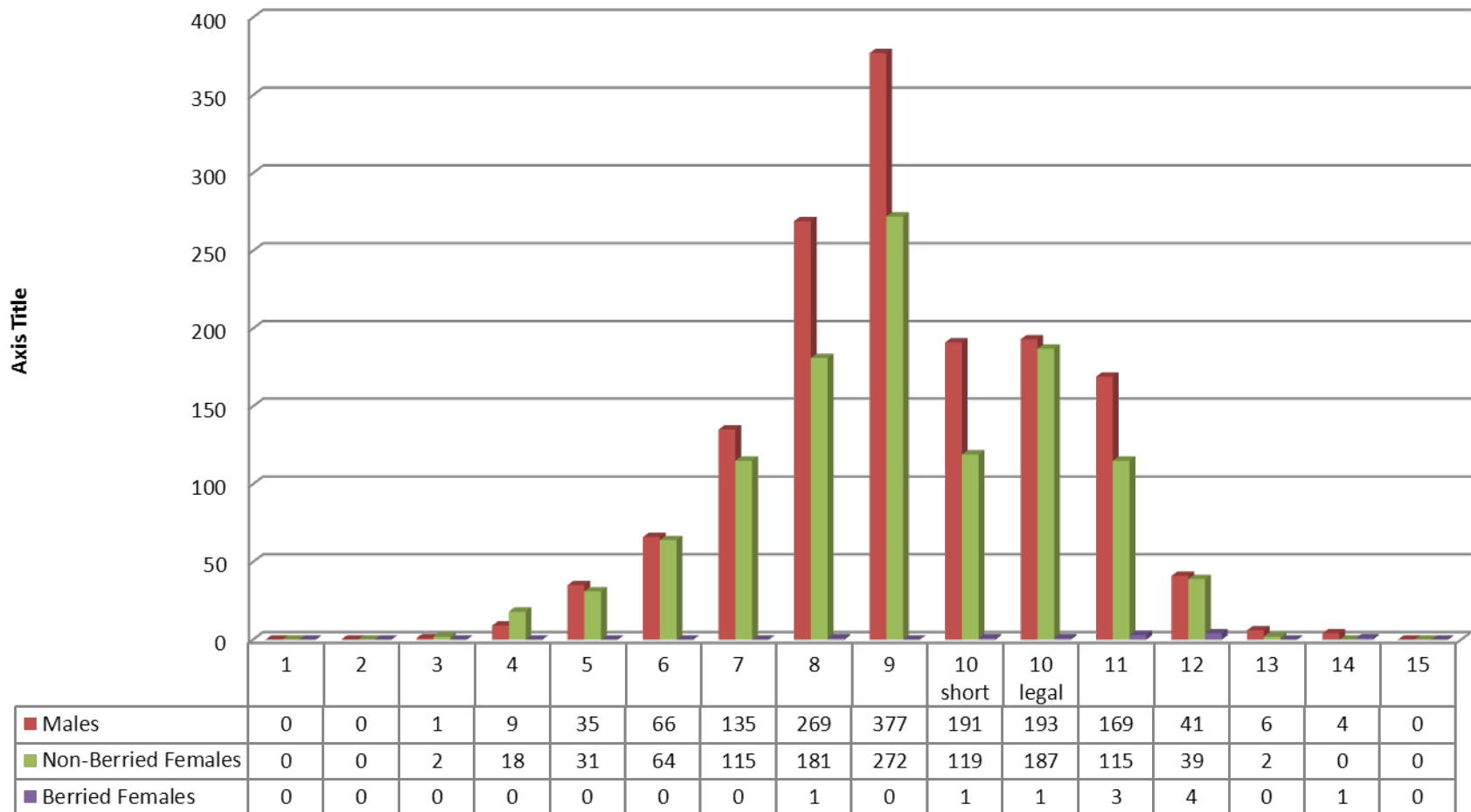
Average Bottom Temperatures for Port Mouton area LFA 33



Number of lobsters caught for Ingomar area Fall 2011

2652 Lobsters

573 Trap hauls



Fall 2010 Males= 1136

Non-Berried Females= 1014

Berried Females=9

Fall 2011 Males=1496

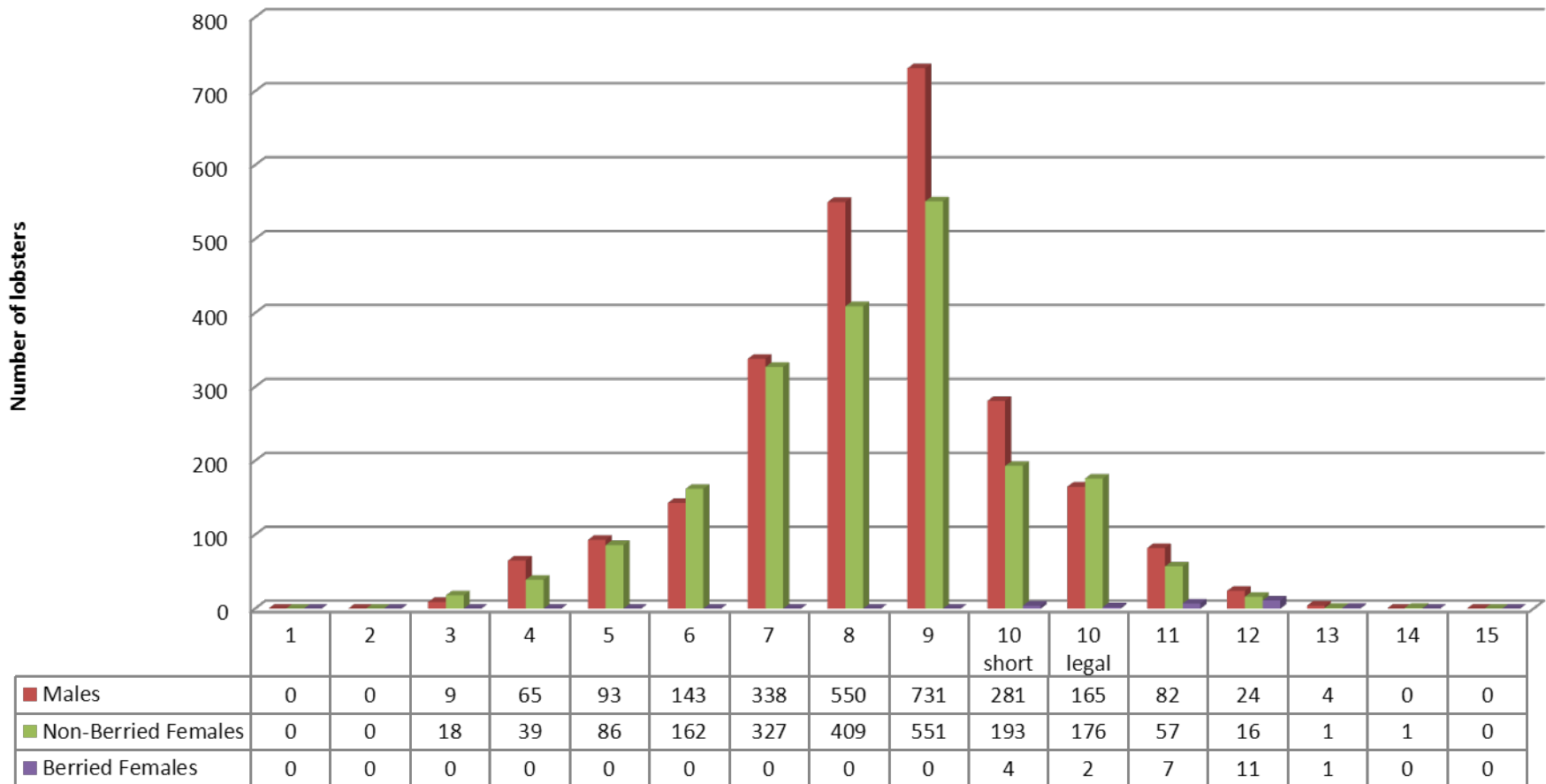
Non-Berried Females=1145

Berried Females=11

Number of lobsters caught for Ingomar area Spring 2012

4546 Lobsters

700 Trap hauls



Spring 2011

Males= 1327

Non-Berried Females= 1114

Berried Female=19

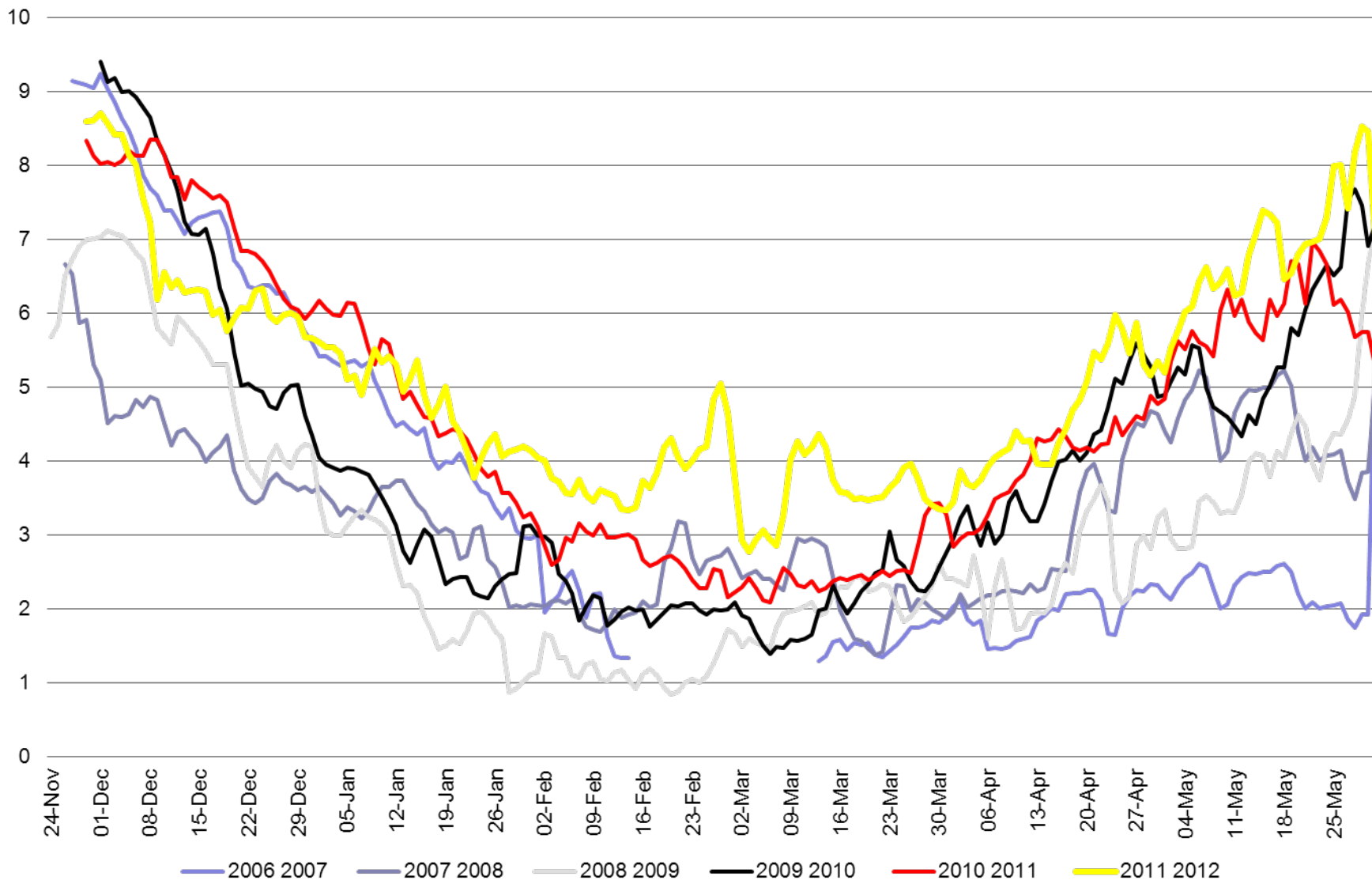
Spring 2012

Males=2485

Non-Berried Females=2036

Berried Females=25

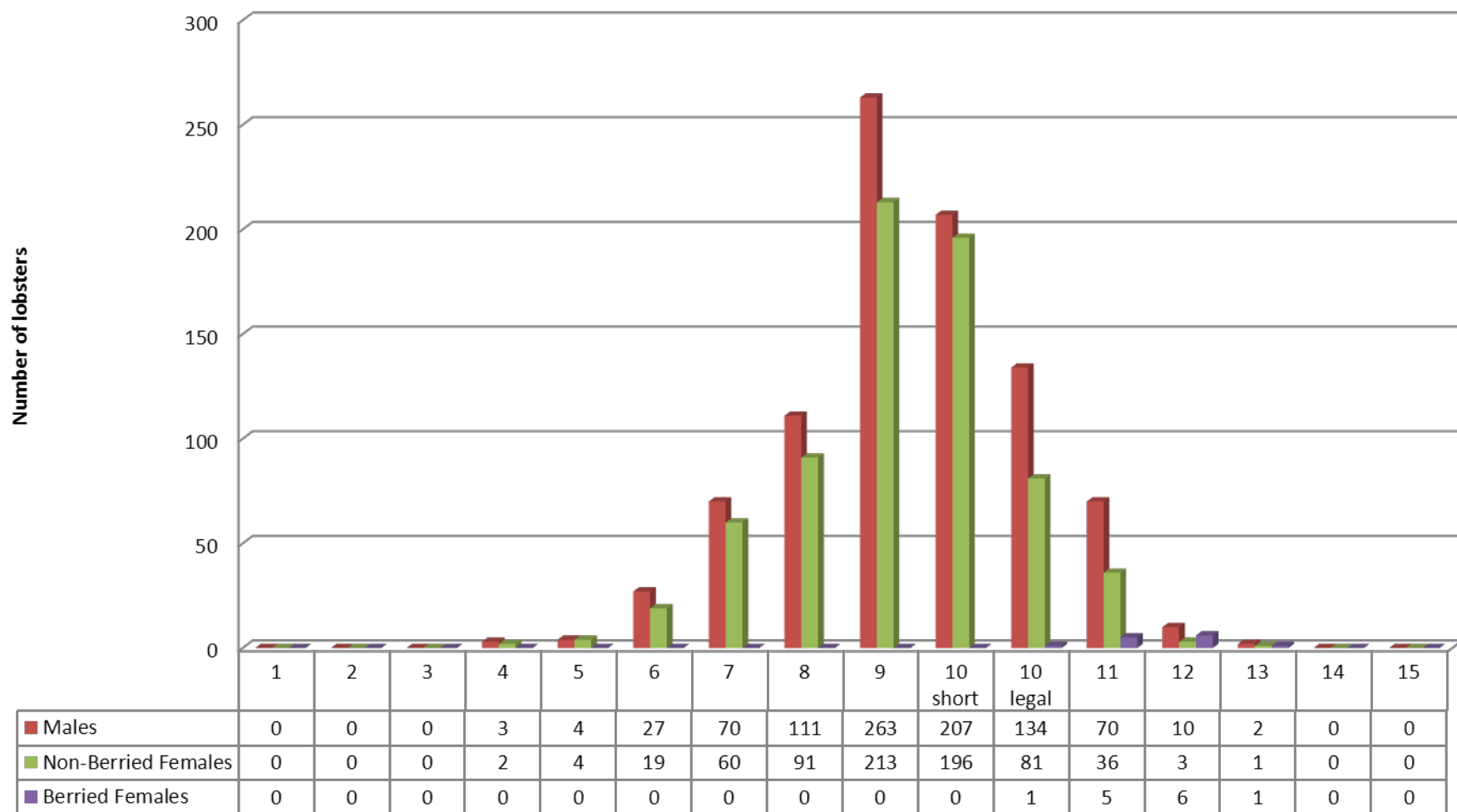
Average Bottom temperature for the Ingomar area LFA 33



Number of lobsters caught for Lunenburg area Fall 2011

1620 Lobsters

319 Trap hauls



Fall 2010 Males= 1100

Non-Berried Females= 769

Berried Females= 16

Fall 2011 Males=902

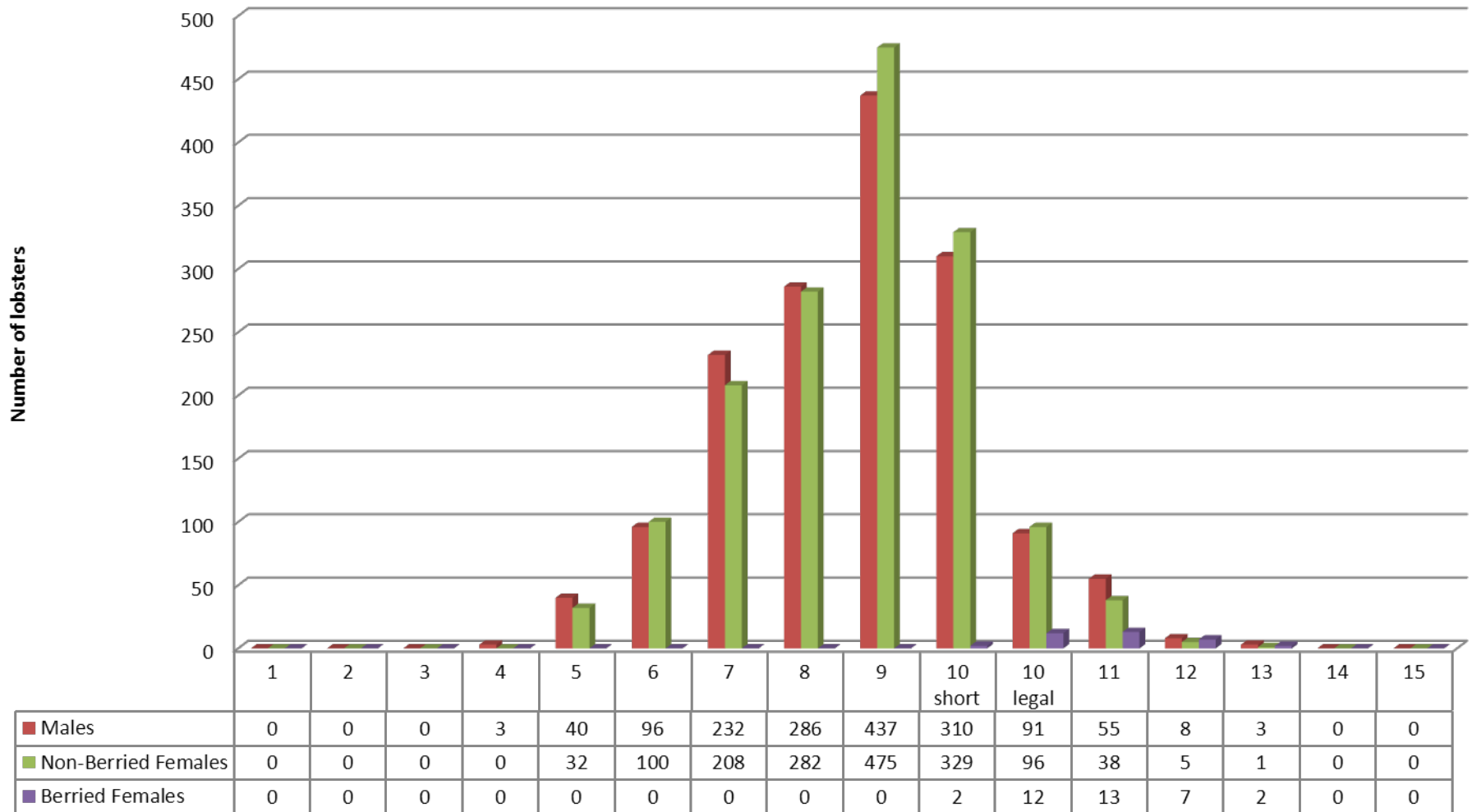
Non-Berried Females=706

Berried Females=13

Number of lobsters caught for Lunenburg area Spring 2012

3163 Lobsters

509 Trap hauls



Spring 2011

Males= 967

Non-Berried Females= 986

Berried Females= 18

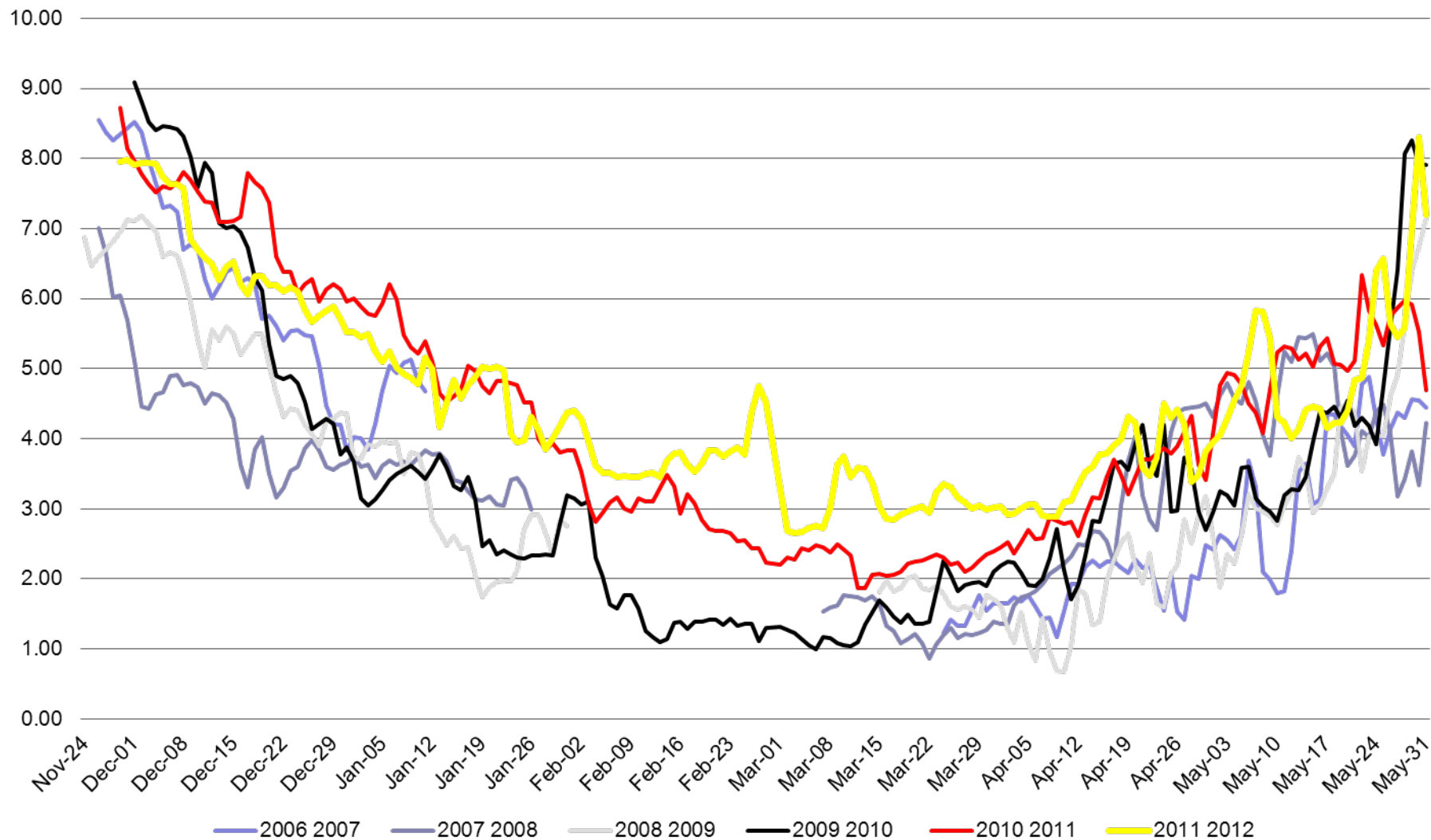
Spring 2012

Males=1561

Non-Berried Females=1566

Berried Females=36

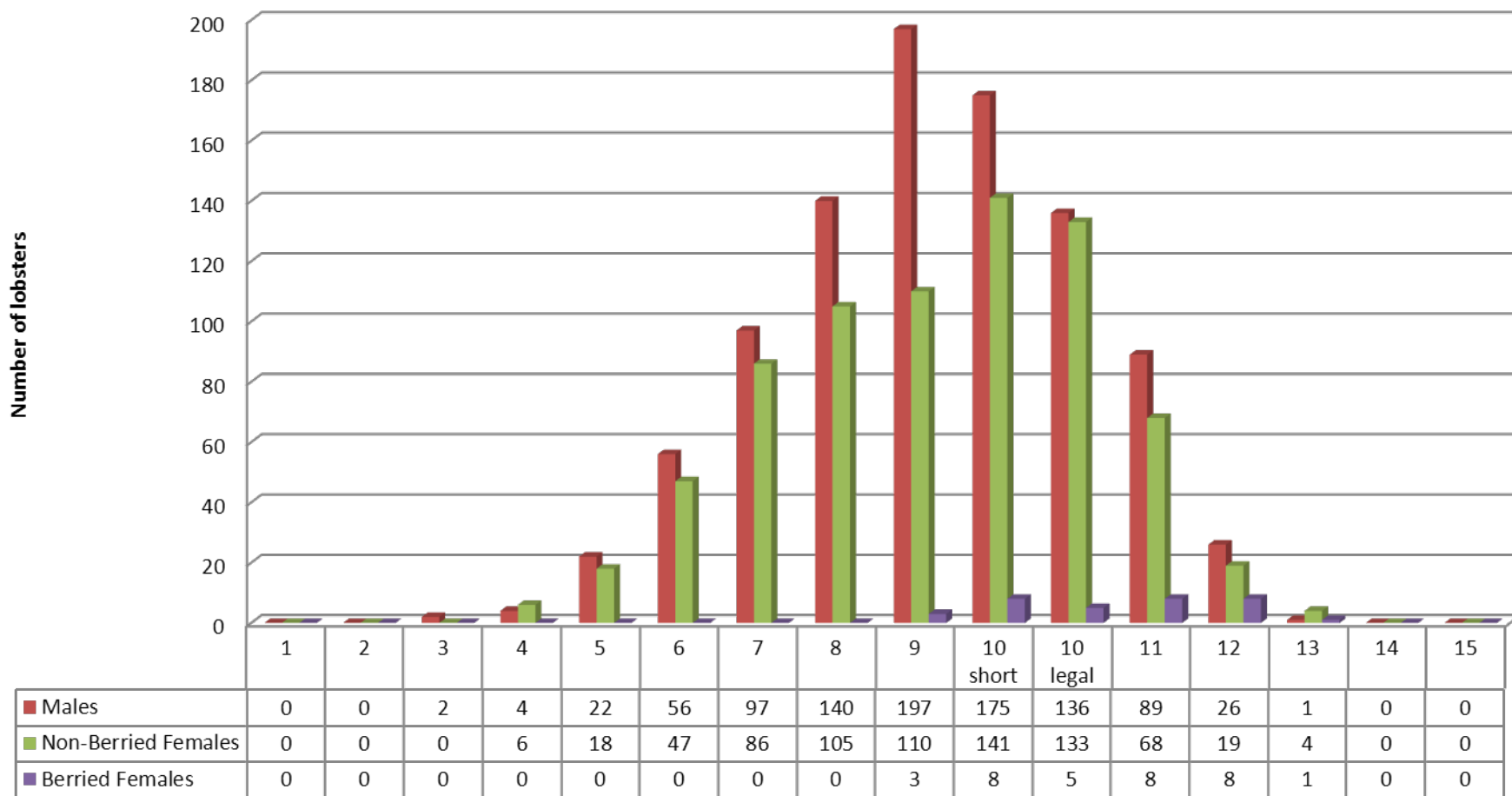
Average bottom temperatures for Liverpool-Lunenburg area LFA 33



Number of lobsters caught for St Margaret's Bay area Fall 2011

1715 Lobsters

416 Trap hauls



Fall 2010 Males= 716

Non-Berried Females= 644

Berried Females= 23

Fall 2011 Males=945

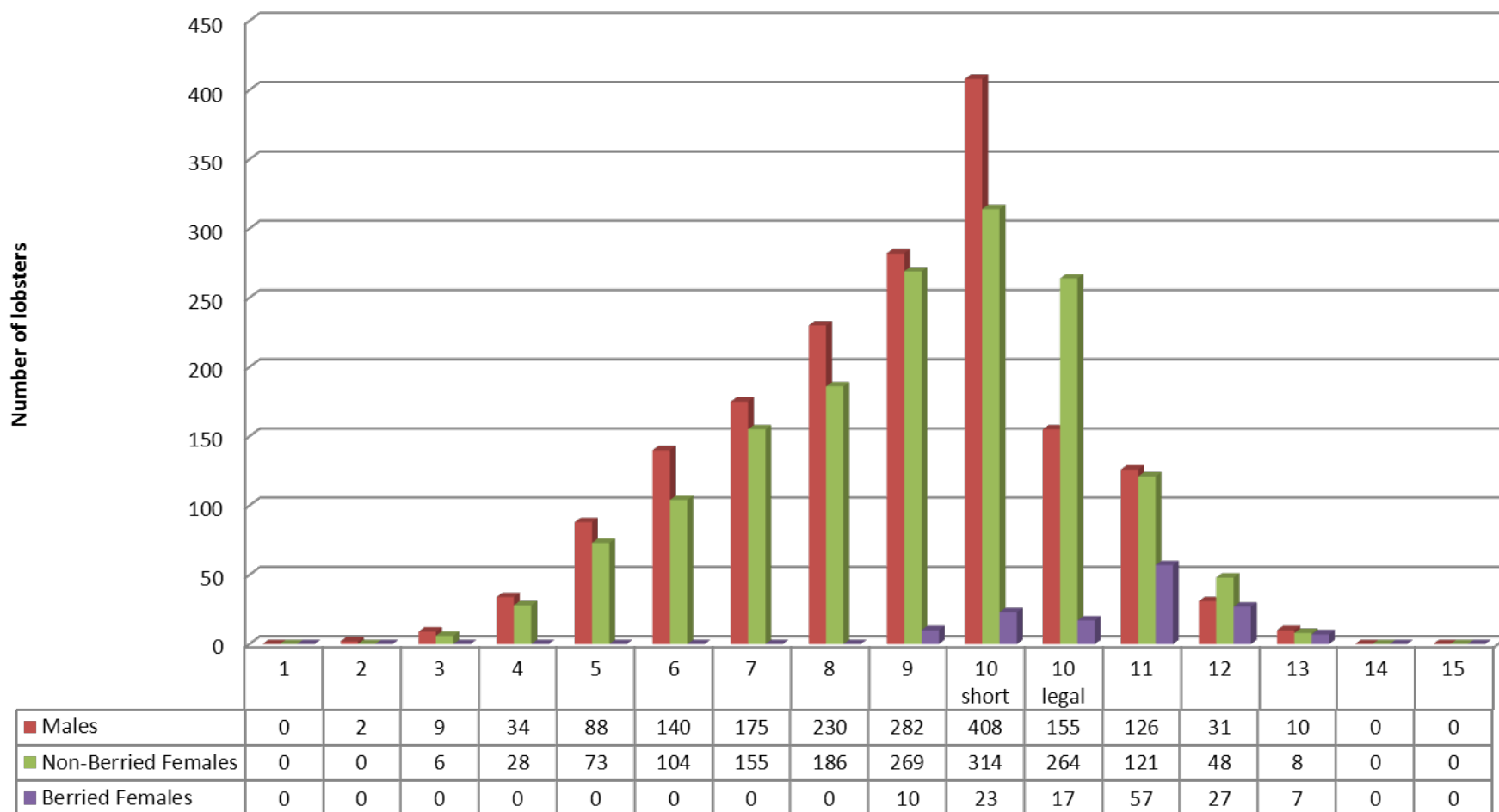
Non-Berried Females=737

Berried Females=33

Number of lobsters caught for St Margaret's Bay area Spring 2012

3407 Lobsters

559 Trap hauls



Spring 2011

Males= 696

Non-Berried Females= 691

Berried Females= 53

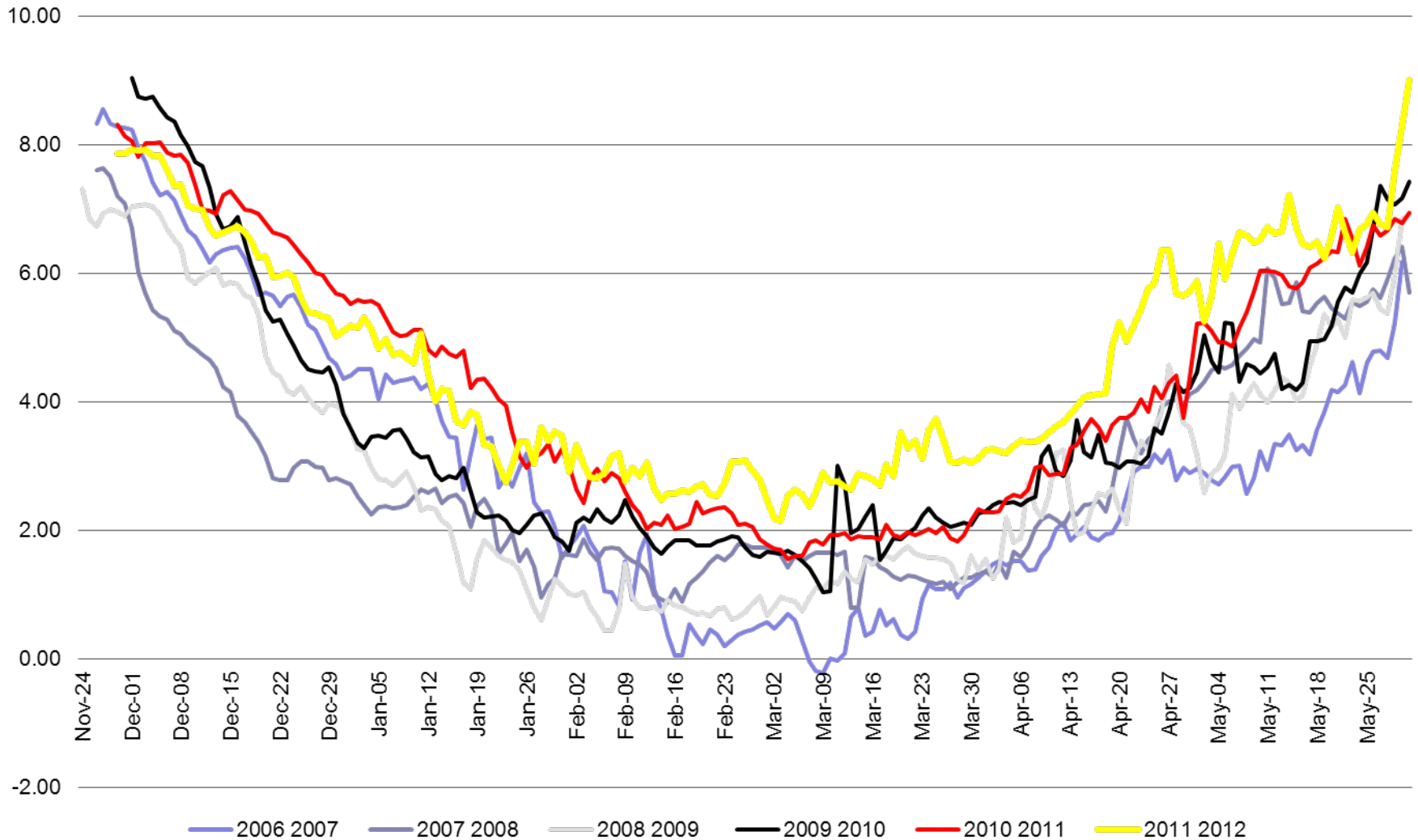
Spring 2012

Males=1690

Non-Berried Females=1576

Berried Females=141

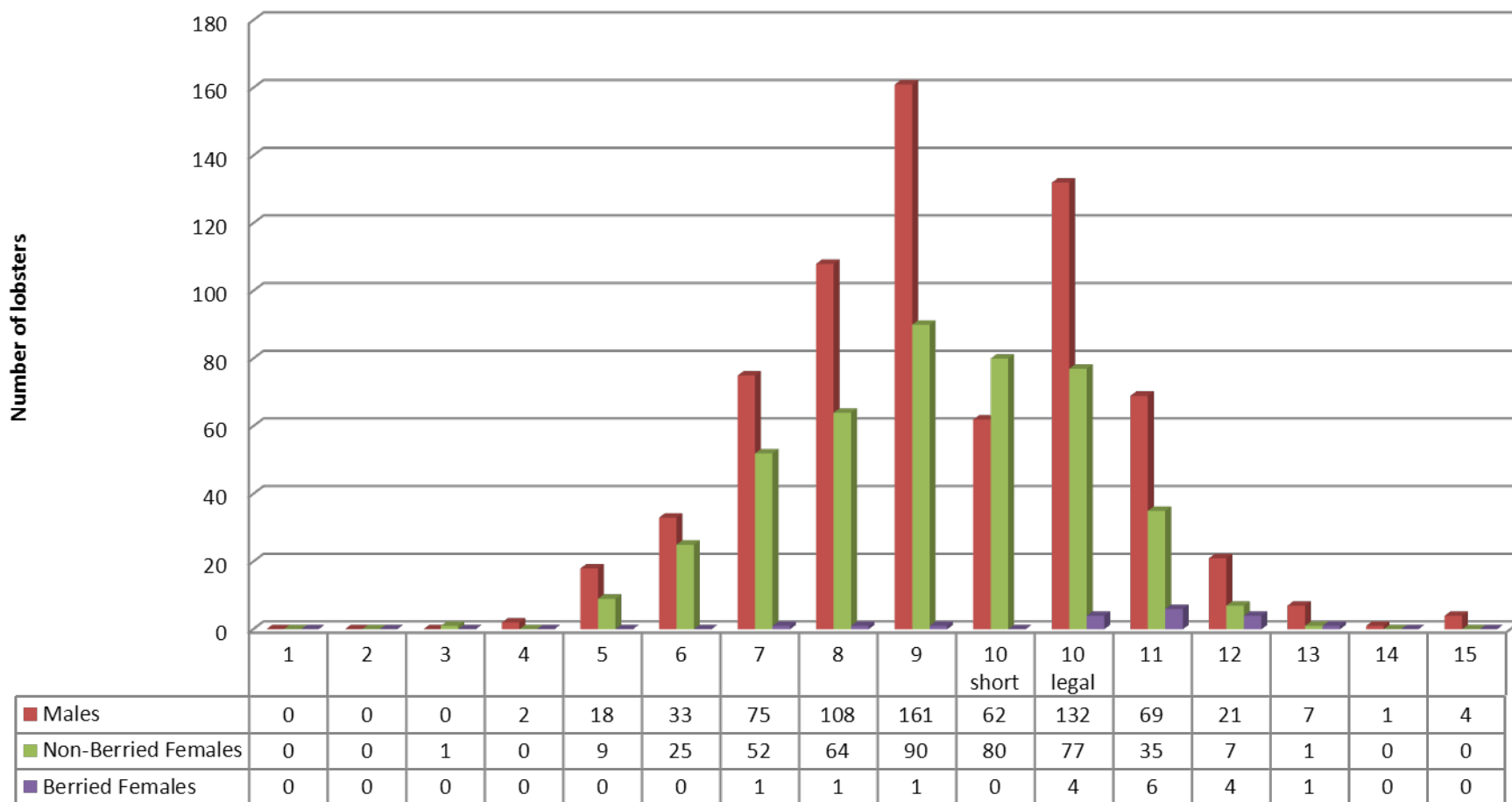
Average bottom temperatures for St Margaret's Bay area LFA 33



Number of lobsters caught for Sambro area Fall 2011

1152 Lobsters

486 Trap hauls



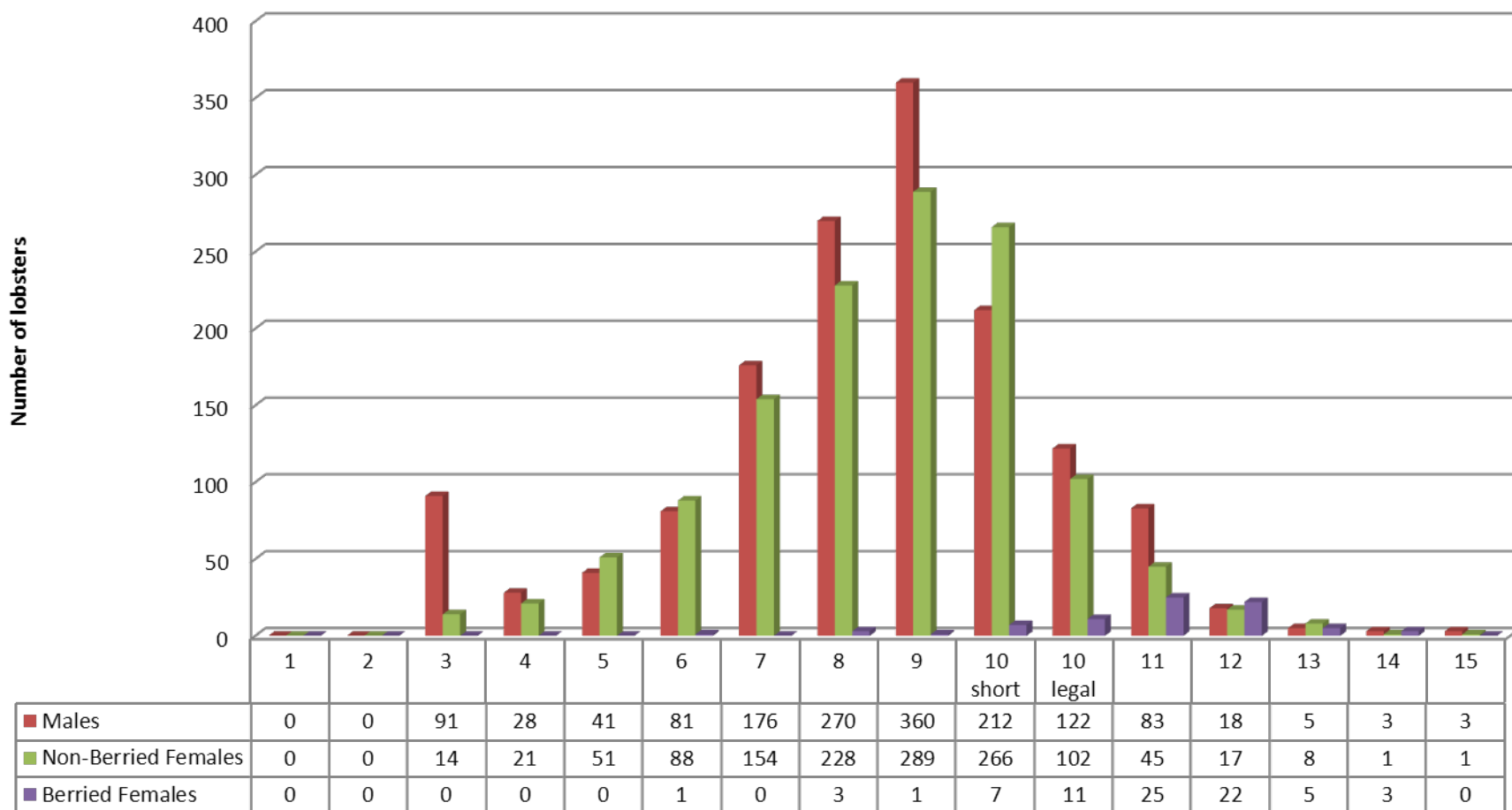
Fall 2010 Males= 728 Non Berried Females= 486 Berried Females= 55

Fall 2011 Males=693 Non-Berried Females=441 Berried Females=18

Number of lobsters caught for Sambro area Spring 2012

2856 Lobsters

613 Trap hauls



Spring 2011 Males= 684

Non-Berried Females= 468

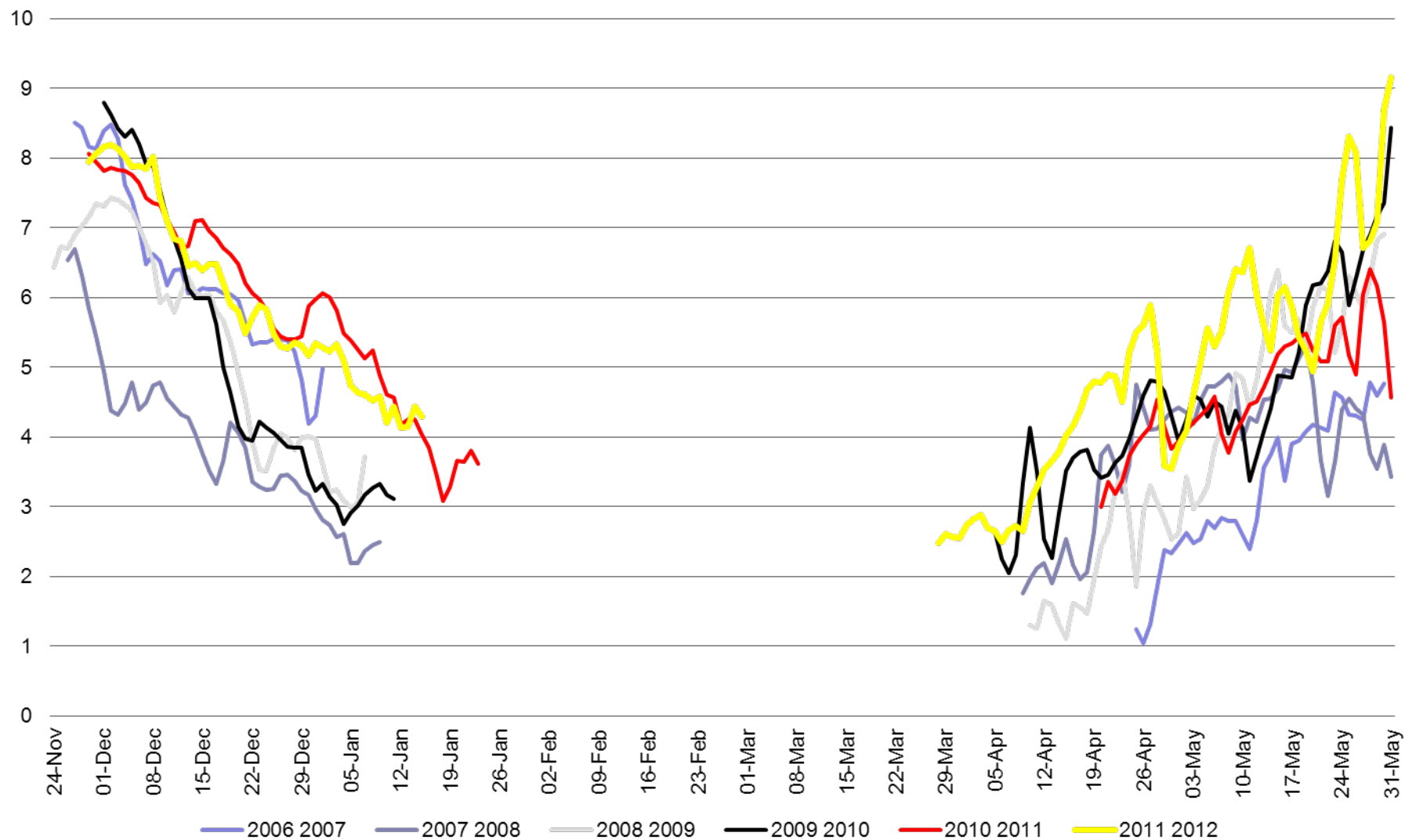
Berried Females= 93

Spring 2012 Males= 1493

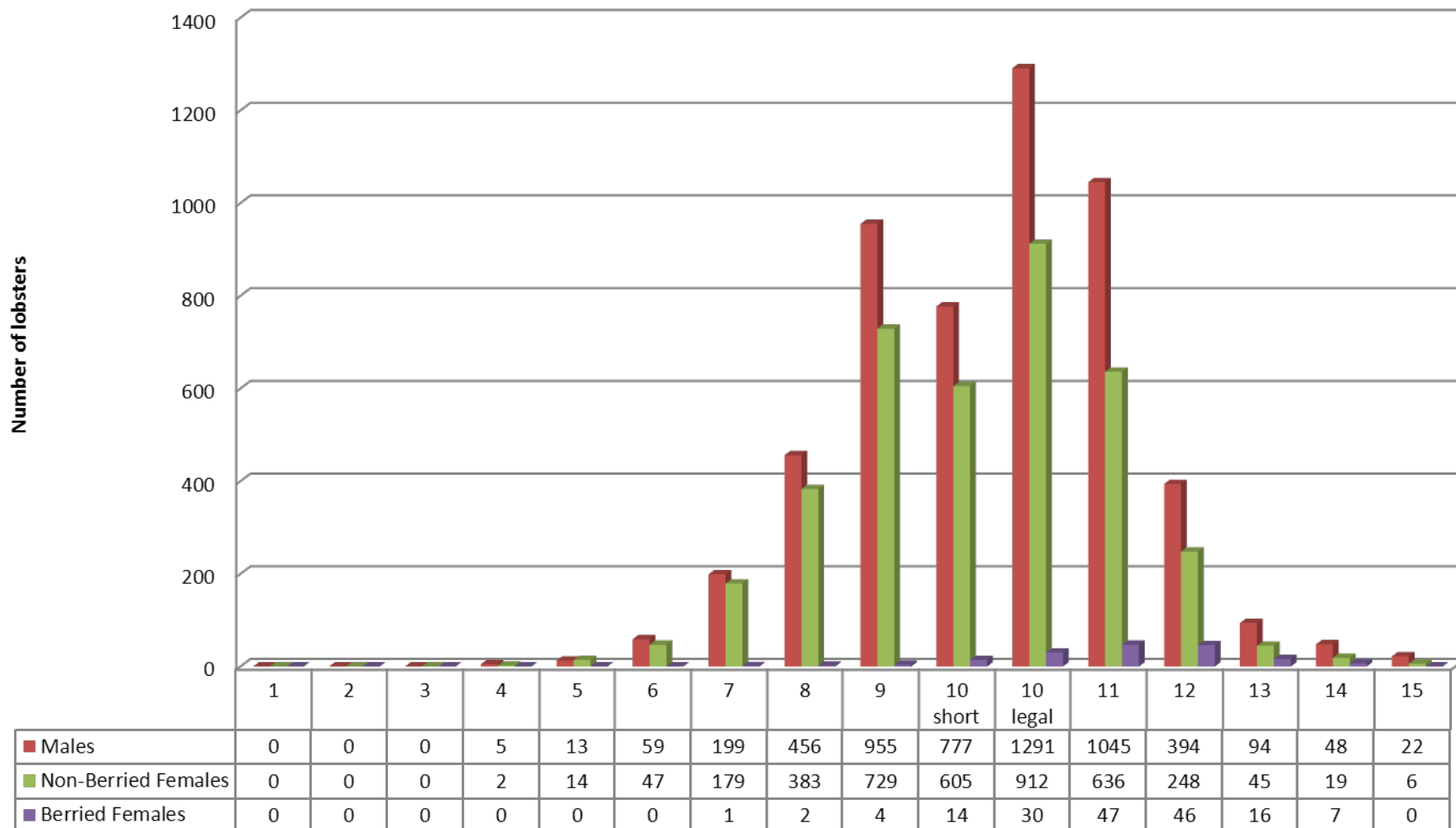
Non-Berried Females=1285

Berried Females=78

Average Bottom temperatures for Sambro area LFA 33



Number of lobsters caught in Commercial traps LFA 33 Fall 2011

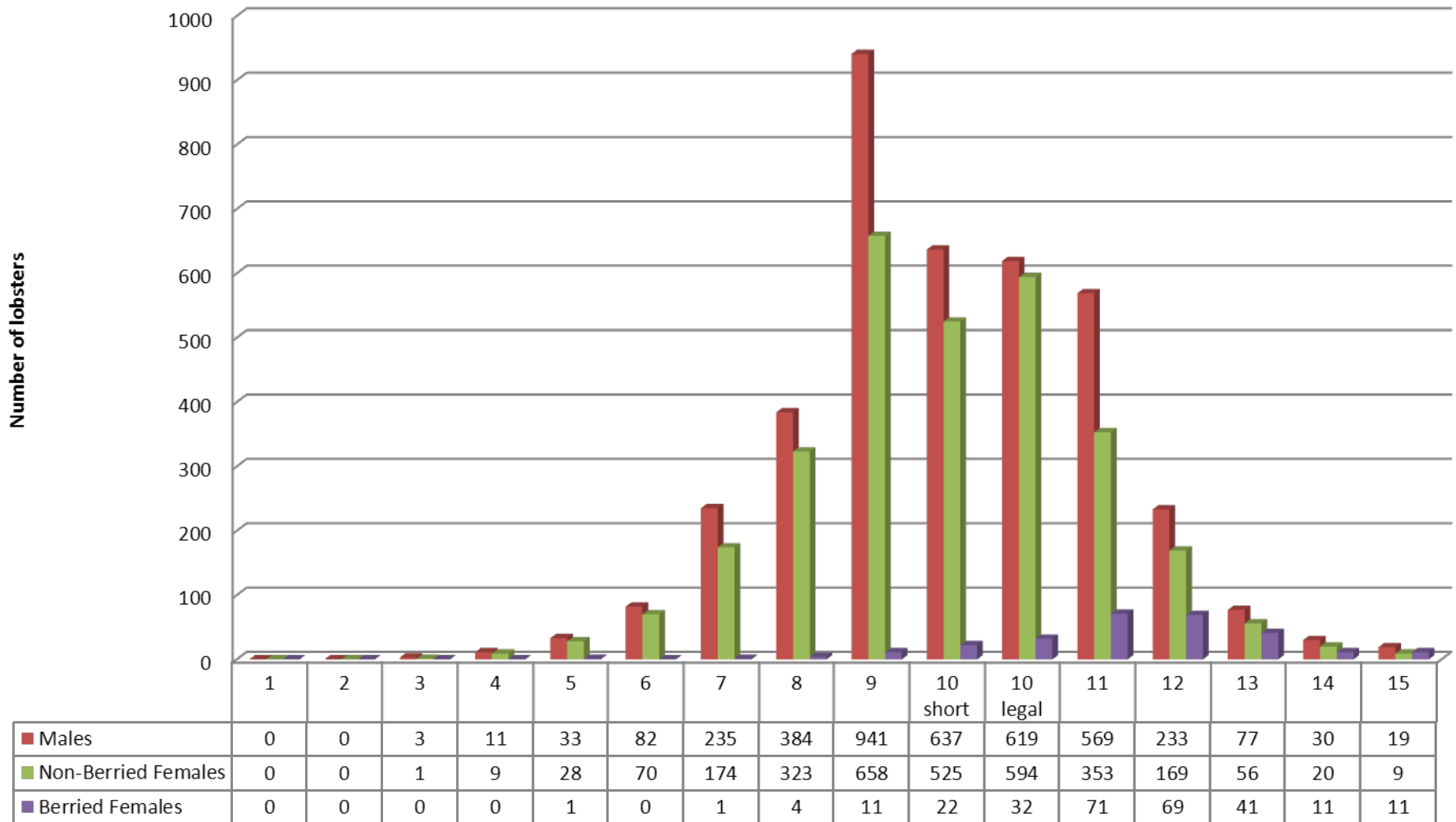


Fall 2010
Fall 2011

7179 Lobsters
9350 Lobsters

2453 Trap Hauls
2906 Trap Hauls

Number of lobsters caught in Commercial traps LFA 33 Spring 2012



Spring 2011
Spring 2012

5904 Lobsters
7136 Lobsters

3100 Trap hauls
3537 Trap hauls